

# Directory of Services

**GIVE US  
A BUZZ!**

## Substance Misuse support for Residents of the Royal Borough of Greenwich

### Opiates and Alcohol support for dependent users

**Support available:** Day programme, one to one support, access to prescribing, group work, access to community detox, referrals for residential treatment, key working, psychology support, peer mentoring, workshops, recovery community, complimentary therapies and pre detox group. **Open access drop in available every day between 10 am - 12pm**

**Individuals with complex support needs will be referred onto the specialist service at The Beresford Project.**



#### CRI Aspire Service

821 Woolwich Road,  
Charlton SE7 8JL  
Tel: **020 8316 0116**

### Cannabis, cocaine and other drugs - Non dependent users

**Support available:** Brief advice and information, motivational interviewing, goal setting, healthy living tips, self management techniques, acupuncture, group work. Brief support available for between one to twelve weeks dependent on need.

Support for users of Cocaine, MDMA, Cannabis, Ketamine, Legal Highs, Methadone, other Club Drugs and Alcohol. **Open access drop in available 9am and 4:30pm Mon - Fri and 9.30am - 12.30pm Sat**



#### Lifeline BaSIS project

Royal Arsenal Medical Centre  
21 Arsenal Way , Woolwich  
London SE18 6TE  
Tel: **020 3696 2640**  
Email: [info@lifelinebasis.org.uk](mailto:info@lifelinebasis.org.uk)

### Young people 17 to 25

**Support available:** Brief advice and information, goal setting, healthy living tips, self management techniques, mentoring support, housing and benefit advice and support, support with education, training and employment and access to social activities, . **Open Mon - Fri 9.00am - 5.00pm**



#### 17.25 Service

Block P Island business centre  
Rooms 20-26.  
Polytechnic street, Woolwich  
Tel: **020 8855 8572**

### Family and Carer support

Specialist family support workers from ADFAM are available within our Aspire services. Offering family support, one to one support, group sessions as well as training and awareness for family members and carers.

**Please call CRI Aspire and ask to speak to the ADFAM worker\***

\* family support also available via the Beresford Project on: **020 3228 1700**



#### ADFAM

CRI Aspire Project ,  
821 Woolwich Road, Charlton SE7 8JL  
Tel: **020 8316 0116**

### Recovery focussed learning and training

The Recovery College offers access to an increasing range of courses and workshops to support people as they discover and develop their skills and talents on their journey through recovery. The Recovery College runs to an academic calendar but also offers seasonal workshops and courses throughout the year.

**Please call to book an enrolment appointment.**



#### @ Recovery College Greenwich

1st Floor , The Equitable Building,  
10 Woolwich New Road,  
Woolwich, London, SE18  
Tel: **020 8294 7909**

[www.givusabuzz.net](http://www.givusabuzz.net)

**GIVE US  
A BUZZ!**

**GIVE US  
A BUZZ!**

# How to find our services



## CRi Aspire Service

821 Woolwich Road, Charlton, London SE7 8LJ



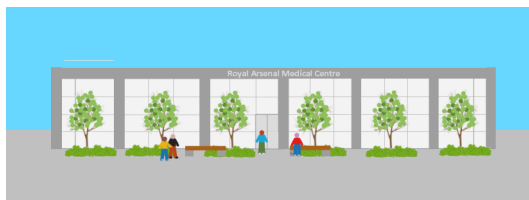
Woolwich Dockyard or Charlton (10 min walk from Charlton)



161 177 180 472 alight at Warspite Rd

## Lifeline BaSIS Service

Royal Arsenal Medical Centre, 21 Arsenal Way, Woolwich, London SE18 6TE



Woolwich Arsenal train station



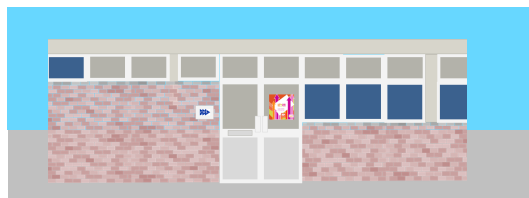
Woolwich Arsenal DLR station



51 53 54 96 122 161 177 178 180 244 291 380 422  
469 472 658 672 alight at General Gordon Square

## 17>25 service

Block P, Rooms 20-26 Island Business centre, Polytechnic Street, Woolwich SE18



Woolwich Arsenal train station



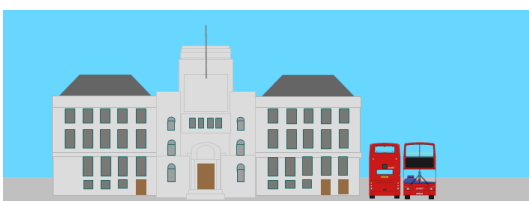
Woolwich Arsenal DLR station



51 53 54 96 122 161 177 178 180 244 291 380 422  
469 472 658 672 alight at General Gordon Square

## @ Recovery College Greenwich

10 Woolwich New Road, Woolwich, London SE18



Woolwich Arsenal train station



Woolwich Arsenal DLR station



51 53 54 96 122 161 177 178 180 244 291 380 422  
469 472 658 672 alight at General Gordon Square

